
GROHE Bathroom

Pure Freude
an Wasser

GROHE
WAVES

NEW

GROHE EUROSMART

FOR BATHROOM, KITCHEN
AND COMMERCIAL



MASTERS OF TECHNOLOGY



THEOCHARIS LIOLIS

Master of Technology, produces unbeatable hardwearing tap surfaces with GROHE StarLight®.

MASTERS OF TECHNOLOGY

SINCE 1873*

For over 140 years GROHE's people have been regarded by their peers in the industry as Masters of Technology, because of their innovations, outstanding design and award-winning fittings.

By a combination of their advanced craftsmanship and their cutting-edge approach to effective teamwork and processes, our Masters of Technology take the lead in developing, designing and manufacturing our outstanding product range, all the while testing and fine-tuning each piece to ensure continued customer satisfaction.

The result: Timeless design. And quality that lasts a life-time. Again and again GROHE products surprise users with unique features that provide 'Pure Freude an Wasser'. When you use a GROHE product you can feel the difference. Time after time.

Take, for example, the new GROHE Eurosmart tap range. By combining GROHE's 7 degree design DNA with dynamic lines and an increased spout height it is designed to offer greater ease of access and user comfort. In addition the new 35 mm GROHE SilkMove® cartridge offers high-flow performance, silky smooth operation and precise control of water flow and temperature, guaranteed to last for the life of the faucet.

Another feature of GROHE Eurosmart is the lasting quality of the surfaces. Thanks to the GROHE StarLight® coating the faucet is incredibly scratch resistant, meaning the dazzling surface won't mark or tarnish.

GROHE EUROSMART

Our Best Eurosmart Ever

GROHE launched the first Eurosmart range in 1999. Selling over 30 million taps worldwide, it has been a classic in our range ever since. Now we're delighted to introduce the third generation of Eurosmart, with a design that has evolved and new features that make it better than ever. Encompassing products for bathrooms, kitchens and commercial settings, we've innovated to make GROHE Eurosmart more comfortable, faster to install and easier to maintain. It makes using water at home a joy.

Eurosmart Bathroom



Eurosmart Commercial



Eurosmart Kitchen



The Eurosmart is a true classic. Based on its typical design language, each new Eurosmart bathroom, kitchen and commercial fitting is a modern interpretation of the contemporary Eurosmart style.

**GROHE Eurosmart
for bathroom**

NEW



1st generation
1999



2nd generation
2006



3rd generation
2015

**GROHE Eurosmart
for kitchen**

NEW



1st generation
1999



2nd generation
2006



3rd generation
2015

EUROSMART BATHROOM ENJOY GREATER COMFORT

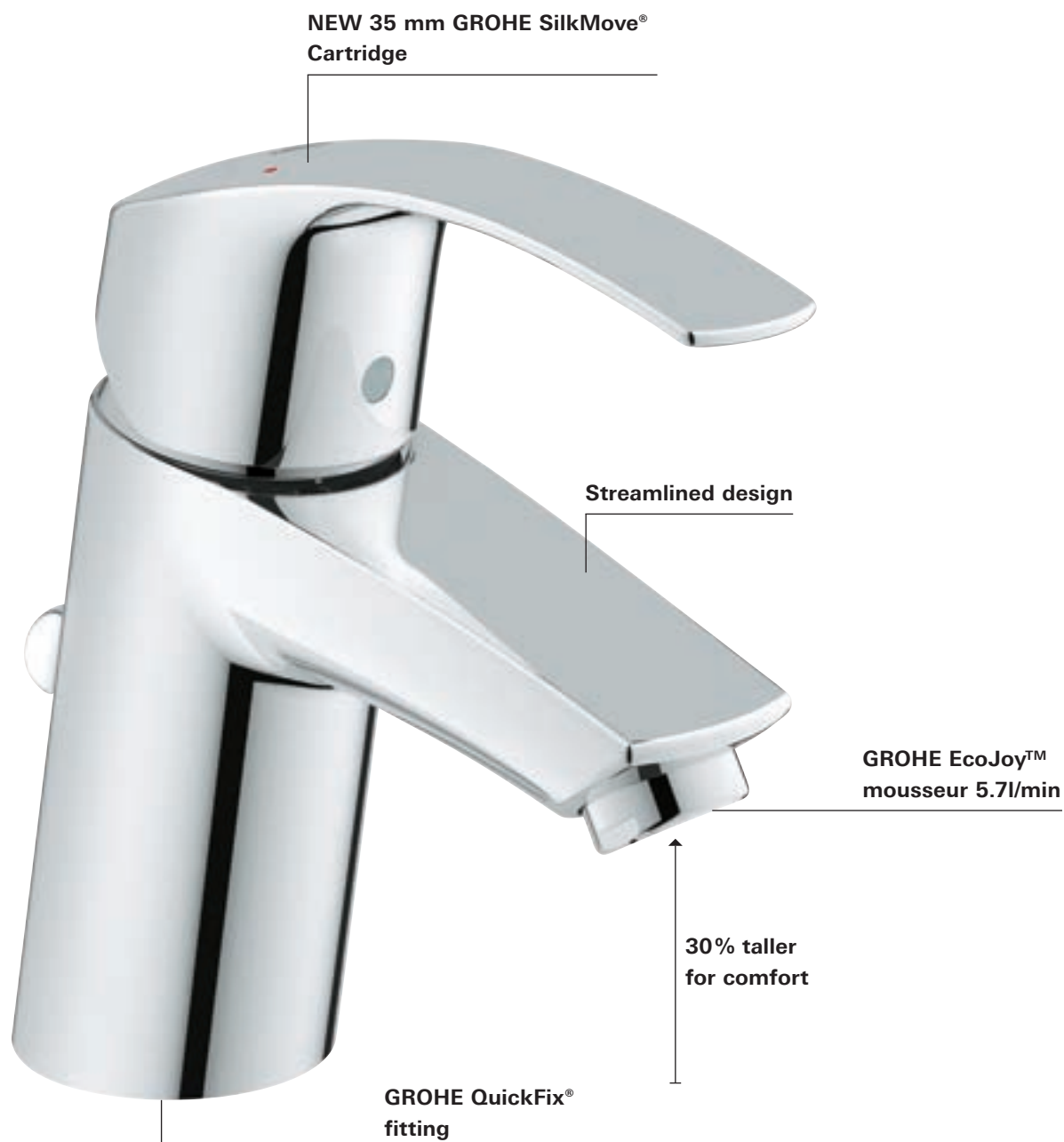


Timeless and durable. GROHE Eurosmart combines reliable quality with high-end luxury in a great product that is always being improved. The newly developed cartridge technology, which gives the housing an even more beautiful shape, is one of many innovations.



EUROSMART BATHROOM NEW FEATURES

The new Eurosmart range has been improved both inside and out, from its streamlined modern design to its state-of-the-art internal technology. We gave the tap a new BlueCore interior, the seal of excellence for GROHE engineering. The new 35 mm GROHE SilkMove® cartridge with integrated temperature limiter is now used for washbasin, kitchen, bath and shower mixers. Eurosmart remains the smart, best-value choice for bathroom projects large and small.



NEW



Trim sets for concealed bath and shower installations with new GROHE QuickFix®. No wobbly trims or visible fixings. Lock and unlock the trim with the new patented GROHE QuickFix® locking system.



Eurosmart, more size options for a perfect fit. The new Eurosmart S-Size is 30% taller than previous models, making this standard basin mixer more comfortable to use. The next step up is the Eurosmart M-Size, higher and with a slightly longer spout for easier access. New to the range is the L-Size, featuring a slim tap body and long curved spout, ideal for washing or filling larger pots.



GROHE EcoJoy™ mousseur 5.7l/min
For reduced water consumption with no reduction in performance.



New 35 mm GROHE SilkMove® Cartridge
With integrated adjustable temperature limiter. One cartridge for washbasin and kitchen mixers as well as for exposed bath and shower mixers.

GROHE Eurosmart

Washbasin



XS **S** M L XL

33 265 002
S-Size
Basin mixer
with pop-up waste set
33 188 002
retractable chain
32 467 002
smooth body



XS **S** M L XL

32 926 002
S-Size
Basin mixer
with pop-up waste set
and GROHE SilkMove® ES
23 372 002
retractable chain
32 154 002
smooth body



XS S **M** L XL

23 322 001
M-Size
Basin mixer
with pop-up waste set
23 323 001
retractable chain
23 324 001
smooth body



XS S **M** L XL

23 393 10E
M-Size
Basin mixer
with pop-up waste set
and GROHE SilkMove® ES
23 394 10E
retractable chain
23 395 10E
smooth body



XS S M **L** XL

23 537 002
L-Size
Basin mixer
with pop-up waste set

Bidet



XS **S** M L XL

32 929 002
S-Size
Bidet mixer
with pop-up waste set
32 927 002
retractable chain



GROHE
SilkMove®



GROHE
SilkMove® ES



GROHE
StarLight®



GROHE
EcoJoy



GROHE
QuickFix®



S-Size



M-Size



L-Size

Bath&Shower



33 555 002
Shower mixer



19 451 002 + 35 501 000
Shower trim set
+ separate concealed body



33 302 002
Bath/shower mixer
with shower set



33 300 002
Bath/shower mixer



19 450 002 + 35 501 000
Bath/shower trim set
+ separate concealed body

Thermostats



34 143 003
Grotherm 1000
Thermostatic shower mixer

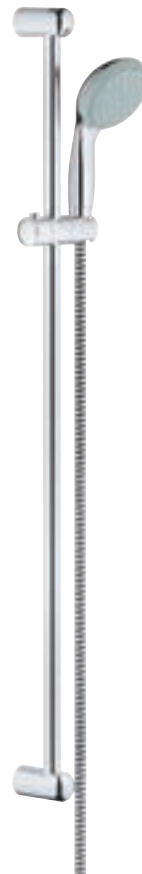
19 984 000 + 35 500 000
Grotherm 1000
Thermostatic shower mixer
+ separate concealed body



34 155 003
Grotherm 1000
Thermostatic bath/shower mixer

19 986 000 + 35 500 000
Grotherm 1000
Thermostatic bath mixer
with integrated 2-way diverter
+ separate concealed body

Showers



27 646 000
New Tempesta 100
Shower set with hand shower 2-spray
rail 900 mm
27 598 000
rail 600 mm

WC



38 505 000

Skate Air

Wall plate for dual flush

use with GROHE concealed WC cisterns

Shower Accessories



27 606 000

Head shower 100
4 Sprays



28 576 000

Shower arm



26 164 000

Shower wall holder set
with hand shower



28 671 000

Shower outlet elbow

28 605 000

Wall hand shower holder



22 037 000

Angle valve

EUROSMART KITCHEN FOR MODERN LIVES



Combine practicality with distinctive design with the new GROHE Eurosmart. Designed to provide unrivalled performance and temperature-safe, effortless control for even the busiest kitchen, it doesn't compromise on style. With an elegantly curved spout and solid cylindrical body the new Eurosmart is a good-looking central feature in your kitchen that is also a pleasure to use, time after time.





EUROSMART KITCHEN TECHNOLOGY INSIDE

The new Eurosmart is designed to make life in the kitchen easier, safer and more comfortable. The tap features an increased spout height – ideal for filling pots – and a tactile, ergonomic lever for greater comfort. It puts safety first, with a temperature-limiter and internal technology guaranteeing that drinking water has no contact with lead and nickel inside the tap. What is more, the new slimmer body, free from split lines, is a sleek, easy-to-clean addition to any style of kitchen.





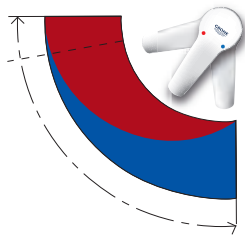
Lead and nickel free: separated inner water ways. Isolated inner water ways guarantee water has no contact with lead or nickel.



Extended height: 35% higher spout for greater user comfort.



Easy exchange mousseur: The mousseur is easy to install and de-install using just a coin.



GROHE cartridge with integrated temperature limiter. Can be individually set to the desired maximum water temperature.



No split lines: For even easier cleaning.



GROHE SilkMove® ES: Optional new cartridge technology which supplies cold water when the lever is opened in the central position.

GROHE Eurosmart



33 281 002
Sink mixer low spout
33 281 20E
with GROHE EcoJoy

30 260 002
Sink mixer low spout
with GROHE SilkMove® ES



33 202 002
Sink mixer high spout



33 490 002
Sink mixer high spout
with GROHE SilkMove® ES
with shut-off value



40 536 000
Contemporary soap
dispenser for liquid
soaps storage bin 0.4 l



32 482 002
Sink mixer
wall mounted
projection 186 mm



31 391 002
Sink mixer
wall mounted
projection 150 mm



32 224 002
Sink mixer
wall mounted
projection 200 mm



GROHE
EcoJoy



GROHE
SilkMove®



GROHE
SilkMove® ES



GROHE
StarLight®



Lead+ Nickel Free



Easy exchange



ComfortHeight



SwivelStop



NEW



EUROSMART CE FOR PUBLIC SPACES

GROHE Eurosmart Cosmopolitan E. The latest version of the Eurosmart Cosmopolitan E offers greater user convenience and requires less maintenance, making it the obvious choice for operators of public and commercial bathrooms. Water flow is activated automatically by an infrared sensor.

The electronically controlled tap has a spout set at a 7 degree angle, leaving extra room for washing hands comfortably. In addition, the increased angle means that dripping water flows faster, leaving less limescale and minimising the need for cleaning. The Eurosmart Cosmopolitan E series is now even more economical, clean and user-friendly than ever before.



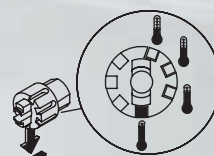
7 pre-set programme options for the following settings:

- **Auto flush function**
(Off, 24 or 72 hours, to avoid water stagnation)
- **Auto flush time**
(60, 300 or 600 seconds)
- **User or time dependable auto flush**
- **Thermal disinfection**
(3.5 or 11 minutes of continuous operation)
- **Cleaning stop**
(off or 180 seconds, easy to use for cleaning staff)
- **Battery voltage indicator**
(LED light flashes to indicate a low battery charge;
4 charge states are displayed: >60%, >40%, >20%, <20%)



Remote Control

To adjust more precisely the settings and read out usage



Mixing device with temperature limiter

GROHE Eurosmart CE



36 327 001
Infra-red electronic basin mixer
1/2" with mixing device
6 V lithium battery



36 325 001
Infra-red electronic basin mixer
1/2" with mixing device
with plug transformer 230 V



36 324 001
Infra-red electronic basin mixer 1/2" with
mixing device
with plug transformer 230 V
for open water heater



36 330 001
Infra-red electronic basin mixer 1/2"
with hidden mixing device
6 V lithium battery



36 386 001
Infra-red electronic basin tap 1/2"
with mixer including Powerbox self-gener-
ating power system



36 206 000
Remote control



36 407 000
Remote control



36 340 000
Extension cable 3 m



36 341 000
Extension cable 10 m



GROHE
StarLight®



GROHE
CoolTouch®



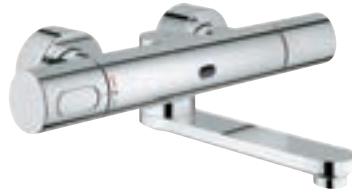
GROHE
TurboStat®



GROHE
EcoJoy



36 332 000
Infra-red electronic wall basin mixer with thermostatic temperature control
projection 287 mm



36 333 000
Infra-red electronic wall basin mixer with thermostatic temperature control
projection 251 mm



36 334 SD0
Infra-red electronic wall basin tap without mixing device
projection 232 mm



36 376 000
Infra-red electronic basin mixer with mixing device and adjustable temperature limiter
projection 232 mm



36 315 000
Infra-red electronic basin mixer with mixing device and adjustable temperature limiter
projection 172 mm



36 336 000
Concealed mounting box with integrated pre-adjustable thermostatic mixer
for 36 334 SD0



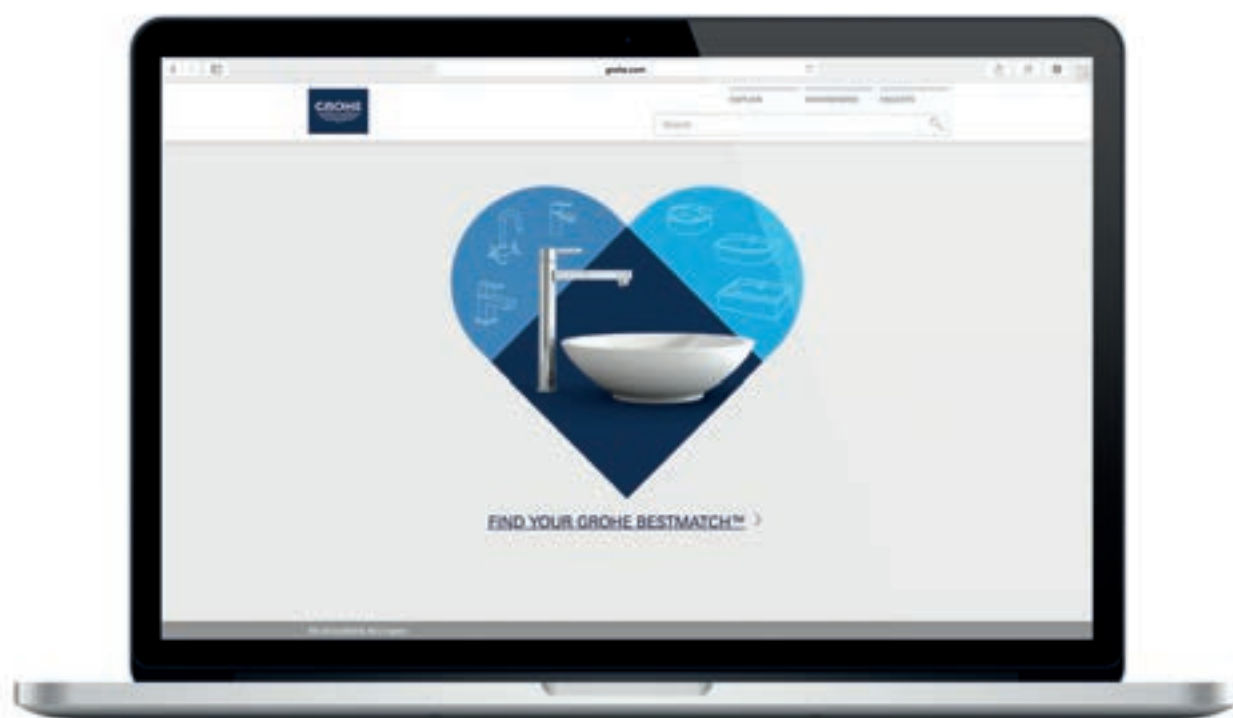
36 337 000
Concealed mounting box for installation with pre-mixed or cold water wall installation
for 36 334 SD0



36 339 000
Concealed mounting box with mixture
for 36 376 000/36 315 000

GROHE.COM

Follow us



Over 3,500 combinations were tested for the new design tool GROHE BestMatch™ so that you can find out which faucets and ceramics will fit your bathroom perfectly. Now in an easy-to-use app.



GROHE BestMatch™ can be found online at www.bestmatch.grohe.com or downloaded for free from the iTunes App Store or Google Play Store.

GROHE AG
Feldmühleplatz 15
D-40545 Düsseldorf
Germany

© 03/2015 – Copyright by GROHE

