

## Vernis Blend

Single lever shower mixer for exposed installation with 2 flow rates

Surfaces: **chrome** Art. no. : **71646000**



### Description

#### product features

- designed to run 1 function
- Maximum flow rate (at 3 bar): 30 l/min
- Flow rate of hand shower (at 3 bar): 15.2 l/min
- ceramic cartridge with Eco handle position for a reduced flowrate by up to 50%
- Maximum temperature can be adjusted on installation
- non-return valve
- hose connection 1/2"
- Connection type: S connections

### Article Details

Price excl. VAT

£ 83.81

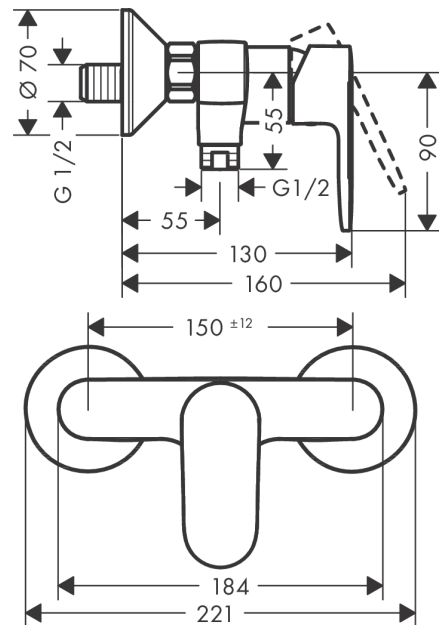
### Certificates



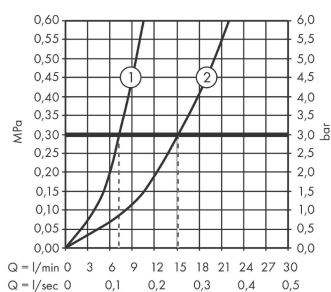
### Product image



### Scale drawing



### Flowchart



- ① Shower outlet 1B-resistance ECO
- ② Shower outlet with 1B-resistance

**Vernis Blend**

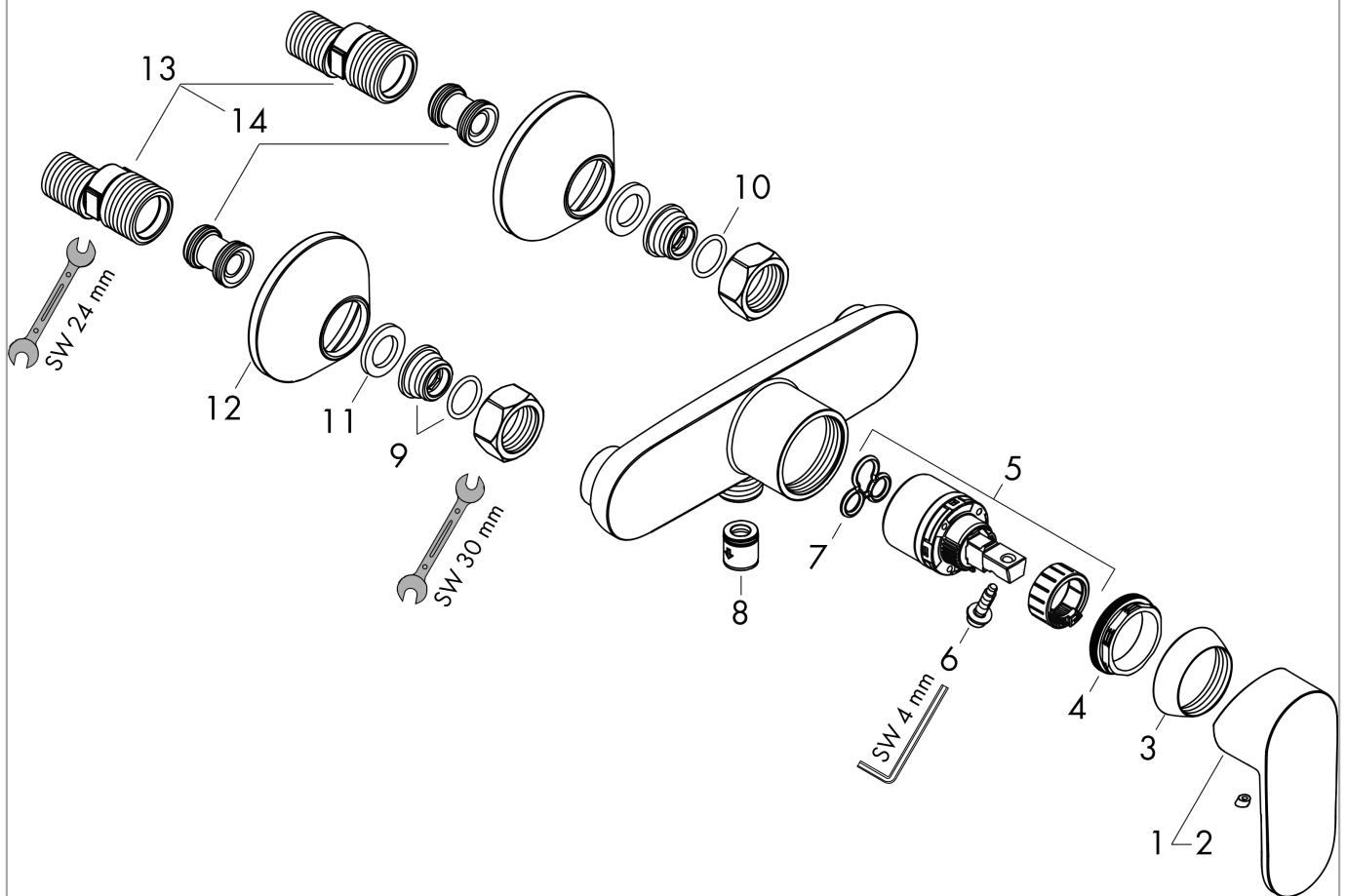
**Single lever shower mixer for exposed installation with 2 flow rates**

Surfaces: **chrome** Art. no. : **71646000**



**Exploded Drawing**

Year of production: >01/21



## Vernis Blend

Single lever shower mixer for exposed installation with 2 flow rates

Surfaces: **chrome** Art. no. : **71646000**



### Spare part list

Year of production: >01/21

Pos.	Description	Art. no.	Price	PU
1	handle	93715000	-	1
2	screw cover	96338000	-	1
3	flange	93716000	-	1
4	nut	93717000	-	1
5	cartridge, assy	95730000	-	1
6	locking screw for handle	95140000	-	1
7	seal	95008000	-	1
8	set of non return valves DW 15	94074000	-	1
9	O-ring 16x2	98133000	-	1
10	connecting thread G½	93767000	-	1
11	filter packing	96922000	-	1
12	escutcheon Ø 70 mm	93718000	-	1
13	set of S-unions (±12 mm)	94140000	-	1
14	noise reduction	96429000	-	1